

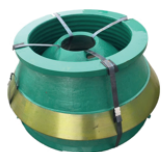


Aftermarket Spare Parts for Crushing and Drilling Equipment

Aftermarket Solutions for Crushing Equipment

We specialize in providing high-quality **aftermarket crusher wear parts** engineered to deliver superior performance, durability, and reliability across a wide range of crushing applications, including Metso, Sandvik, and Terex. Our parts are designed and manufactured to meet or exceed OEM standards, ensuring optimal compatibility, reduced downtime, and extended service life for your crushing machinery.

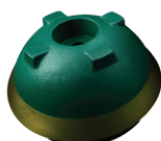
We are proud to be a **trusted supplier of premium alternative** wear parts for most major brands of crushing equipment, such as Metso, Sandvik, and Terex. Our replacement components are produced from the finest materials and undergo rigorous quality inspections to guarantee consistent performance in the most demanding operating environments.



Bowl & Mantle



Torch Ring



Feed Cone



Main Frame Liner



Frame Seat Liner



Controller



Seal



Accumulator



Socket liner



Socket



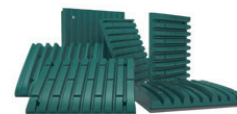
Lower head bushing



Bushing



Wedge



Jaw Plates



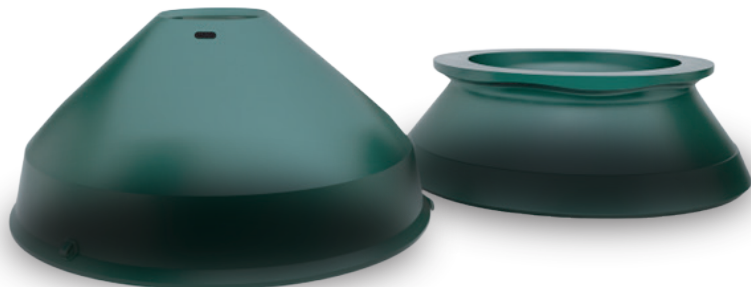
Damper

Cone Crusher Replacement Parts

We supply premium compatible cone crusher parts including:

- Mainframe Assembly
- Head Assembly
- Counter Shaft Box
- Locknut
- Liner Assembly
- Other Miscellaneous Components

Each part is built for maximum wear resistance, ensuring smooth crushing operation and enhanced productivity.

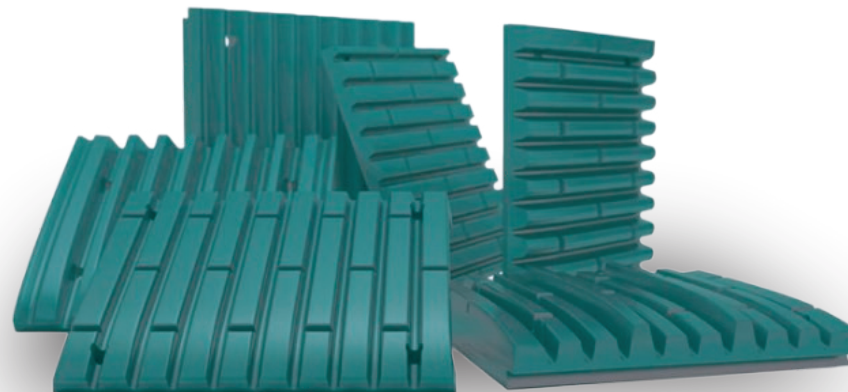


Jaw Crusher Replacement Parts

Our jaw crusher range includes high-quality compatible replacement parts such as:

- Jaw Plate
- Fixed Jaw Plate
- Cheek Plate
- Toggle Plate
- Other Miscellaneous Components

All jaw wear parts are cast and machined to exact dimensions for easy fitment and long-lasting reliability.



Stock & Brand Compatibility

We maintain a comprehensive inventory of compatible replacement parts to suit a wide range of crusher and drilling equipment models and brands, ensuring fast delivery and minimal downtime for your operations.

Our strategically located main warehouse facilities in Dubai Investment Park (DIP), Fujairah, and Ras Al Khaimah allow us to efficiently serve customers across the UAE and the wider Middle East region. Each facility is fully equipped with storage, logistics, and dispatch systems designed to ensure prompt availability of high-demand aftermarket parts.

Cone Crusher Bowl & Mantle (Wear Parts) - HP Series Cone Crushers

HP100 HP200 HP300 HP4 HP400 HP5 HP500 HP700 HP800



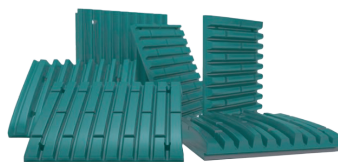
Part no.	Description	Model
CRN11947963	BOWL LINER UPPER	GP500
CRN11941326	MANTLE LINER	GP500
CRN11941328	BOWL LINER LOWER	GP500



Part no.	Description	Model
CRN55208281	BOWL LINER	HP300
CRN55308262	MANTLE	HP300
CRN55208523	BOWL LINER STD EC	HP400
CRN55308512	MANTLE STD EC	HP400
CR7055208395	BOWL LINER SH F	HP400
CR7055308388	MANTLE SH F & C	HP400
CR7055208512	BOWL LINER STD M	HP500
CR7055308503	MANTLE STD M & F	HP500
CRN55209252	BOWL LINER	HP4
CRN55309257	MANTLE	HP4



Part no.	Description	Model
CR1063914652	TORCH RING	HP300
CR1063915676	TORCH RING	HP400
CR1063915668	TORCH RING	HP500
CRN12080210	TORCH RING	HP4



Part no.	Description	Model
CR814329274900	SWING JAW LINERS	C160
CR814329275000	FIXED JAW LINERS	C160



Part no.	Description	Model
CR1022130525	Bushing	HP300
CR1022133692	Bushing	HP300



Part no.	Description	Model
CR1086342700	Wedge	HP300
CR1086342846	Wedge	HP400
CR1086342866	Wedge	HP500



Part no.	Description	Model
CR1048514410	MAIN FRAME SEAT LINER	HP300
CR1048516272	MAIN FRAME SEAT LINER	HP400
CR1048516296	MAIN FRAME SEAT LINER	HP500



Part no.	Description	Model
CR1022147349	Bushing upper head	HP400
CR1022147321	Bushing upper head	HP500

Cone Crusher Bowl & Mantle (Wear Parts) - HP Series Cone Crushers

HP100 HP200 HP300 HP4 HP400 HP5 HP500 HP700 HP800



Part no.	Description	Model
CRMM0235553	Rubber mounting	TS1313



Part no.	Description	Model
CRMM1089160	Relief valve	GP500



Part no.	Description	Model
CR1055981158	FEED CONE	HP400
CR1055981159	FEEDCONE N65558252	HP500
CRN65558252	FEED CONE 1055981159	HP500
CRN98000008	FEED CONE	HP4
CR7065558094	FEED CONE N65558321	HP300



Part no.	Description	Model
CR7039608251	Socket	HP300



Part no.	Description	Model
CR7022102501	Box Guard Counter Shaft	HP300
CR7022102500	Box Guard Counter Shaft	HP300
CR7022102502	Guard Arm	HP300



Part no.	Description	Model
CR1022145975	Lower head bushing	HP300
CRN15655252	Lower head bushing	HP500



Part no.	Description	Model
CRN02150053	Oil pump	HP500
CRN02150052	Oil pump	HP500
CRMM0237480	Double Pump	HP500
CRN02152939	HYD Pump	GP500S
CRMM0439134	HYD Pump	GP500S
CRN02150053	Oil pump	HP500



Part no.	Description	Model
CR7004205209	Suspension MM0419462	HP500



Part no.	Description	Model
CR7034360028	Controller	Common

Cone Crusher Bowl & Mantle (Wear Parts) - HP Series Cone Crushers

HP100 HP200 HP300 HP4 HP400 HP5 HP500 HP700 HP800



Part no.	Description	Model
CR7035800600	Socket liner	HP300
CRN35800601	Socket liner	HP400



Part no.	Description	Model
CRN21900352	Main Frame Liner	HP500



Part no.	Description	Model
CR7002125801	Pressure Switch	Common



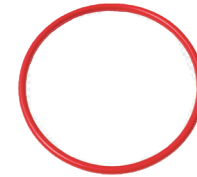
Part no.	Description	Model
CR1094280065	Clamp Cylinder	HP300



Part no.	Description	Model
CR1093030108	TRAMP CYLINDER	HP300



Part no.	Description	Model
CRN98000561	ECCENTRIC ASSEMBLY	HP300



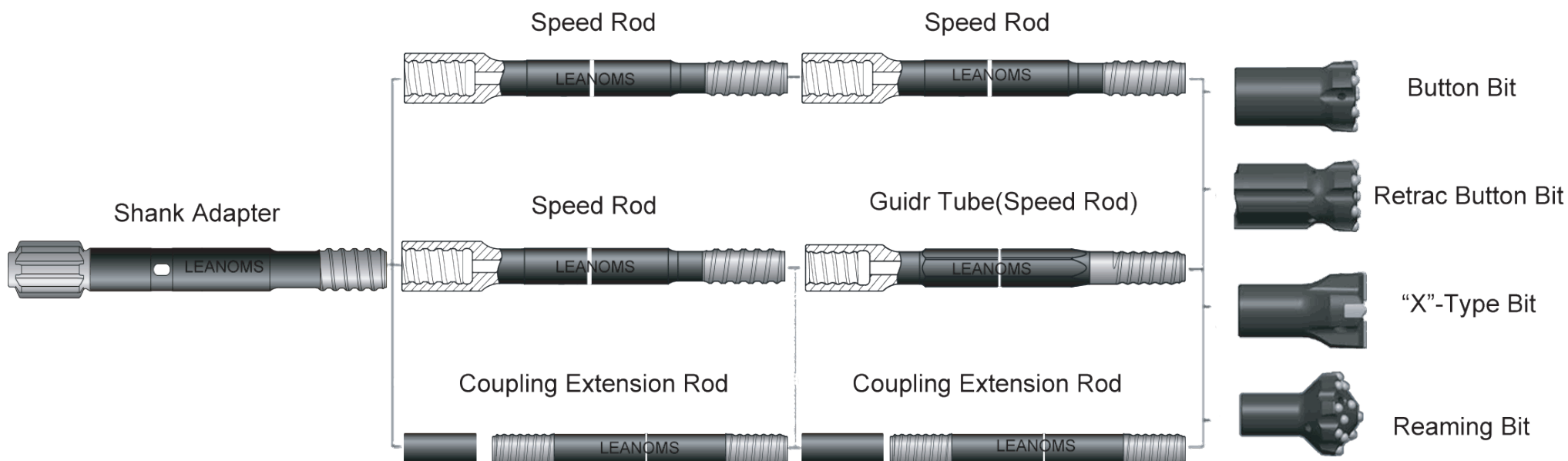
Part no.	Description	Model
CR1063518930	Seal ring	HP500



Rock drill tools solution (Top Hammer and Down the hole)

We offer a complete range of high-performance rock drilling tools designed for reliability, strength, and efficiency in the toughest mining and quarrying conditions. Our product line includes Monark brand and premium Chinese-manufactured drill tools, delivering exceptional value without compromising on quality or performance.

ASE ensures that every tool is manufactured to meet international standards and field-tested to perform consistently under demanding conditions. We provide cost-effective, durable, and easily replaceable solutions to keep your drilling operations running at peak productivity.



Rock drill tools solution (Top Hammer and Down the hole)



Monark Rock Tools, a globally recognized name in drilling technology, represents innovation and long-term dependability. Manufactured with advanced metallurgical precision and high-grade alloys, Monark products ensure maximum penetration rates, extended service life, and reduced operating costs. Our Monark range includes:

- Top Hammer Drilling Tools for surface and underground drilling applications
- Shank Adapters engineered for strength and vibration resistance
- Coupling Sleeves for accurate rod alignment and torque transmission
- Drill Rods and Extension Rods designed for superior fatigue strength
- Button Bits and Cross Bits optimized for penetration and durability



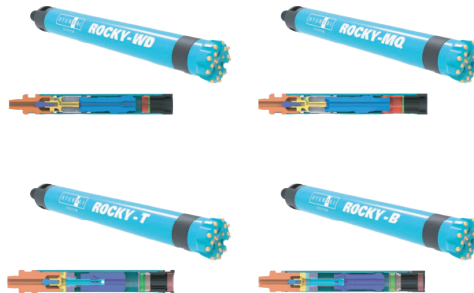
Rock drill tools solution (Top Hammer and Down the hole)



EVERDIGM

Everdigm is a globally recognized manufacturer of high-performance drilling and construction equipment, known for its advanced engineering, reliability, and durability in the most demanding field conditions. Headquartered in South Korea, Everdigm has earned a reputation for producing world-class products that combine innovation, efficiency, and affordability for mining, quarrying, and infrastructure development industries.

We are proud to represent and support the Everdigm range of drilling tools and equipment, offering complete aftermarket solutions, spare parts, and technical support to ensure smooth and continuous operation for our customers. Our collaboration with Everdigm allows us to deliver both new equipment and premium parts with the assurance of genuine quality parts and performance.

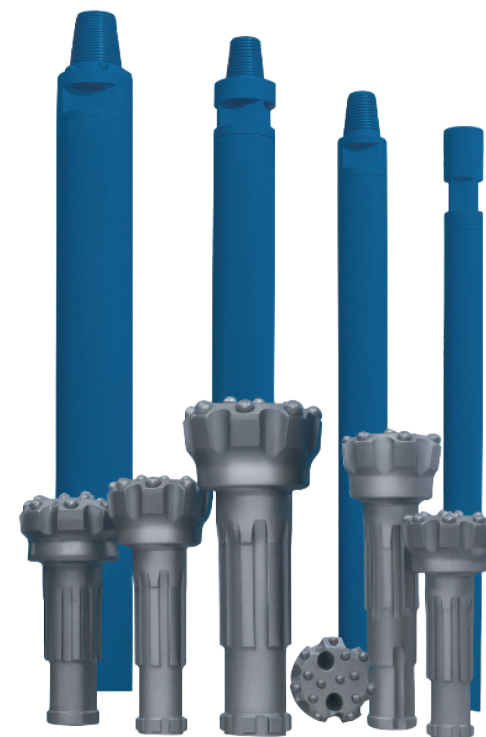


Chinese Drill Bits and Hammers

We also supply a cost-efficient range of Chinese drill tools manufactured with advanced forging and heat-treatment technology to deliver reliable performance in medium-to-heavy drilling operations. Our Chinese line provides an excellent balance between affordability and operational endurance, making it ideal for contractors and fleet operators looking for value-driven solutions.

Available products include:

- DTH (Down-The-Hole) Hammers and Bits for various rock formations
- Top Hammer Bits and Threaded Rods for versatile surface drilling
- Taper Bits, Taper Rods, and Integral Rods for light to medium-duty works
- Accessories and Couplings to suit multiple drill models and sizes








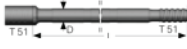
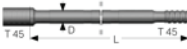


Quality and Compatibility

All our drilling tools undergo strict quality assurance and field testing to ensure compatibility with leading international drilling systems, including Atlas Copco, Sandvik, Furukawa, and Epiroc machines. We maintain sufficient stock of critical wear parts and consumables for quick supply and replacement, helping you minimize downtime and maximize drilling efficiency.

Why Choose ASE Drilling Solutions










- Wide range of Monark and premium Chinese drill tools under one roof
- Cost-effective, durable, and performance-tested products
- Immediate availability from maintained stock
- Reliable customer support and technical guidance

DTH Hammer & Bit	ASE Part No.	Description	Model	Dimensions				
				Shank	Thread	Inch	D (mm)	Rec. Hole Size
	DTHHD45-340-4	4" Hammer WD45	WD45-TD40	DHD340, QL40, SD4	API 2 3/8 REG.PIN	4"	101.6	115 ~ 130
	DTHHQL50-5	5" Hammer WD55	WD55-QL50	DHD350, QL50, SD5	API 3 1/2 REG.PIN	5"	126	140 ~ 152
	DTHHD45-127FF	DTH Drill bit 127mm WD45	WD45-TD40	DHD340, QL40		4"	127	
	DTHHQL50-152FF	DTH Drill bit 152mm WD55	WD55-QL50	DHD350, QL50		5"	152	
	DTHAD01-0069	Adaptor 2 3/8" API Reg	WD45-TD40					

Rods	ASE Part No.	Description	Model	Dimensions				
				L (mm)	ft	in	D (mm)	in
	DTTH-51-MF5537-L 3660	MF Rod T51 L-3660	T51	3660	12'	-	52	2"
	DTTH-45-MF7737-L 3660	MF Rod T45 L-3660	T45	3660	12'	-	46	1 1/2"
	DTTH-45-EX7331C- L3050	Extension Rod, T45 L-3050	T45	3050	10'	-	46	1 3/4"
	DTTH-45-EX7337C- L3660	Extension Rod, T45 L-3660	T45	3660	12'	-	46	1 3/4"

Shank Adaptor	ASE Part No.	Description	Model	Thread	Length (mm)
	DTTH-51-SA7577-O 3	Shank Adapter HL700/HL710-52	T51	T51	600
	DTTH-45-SA7577-O 2	Shank Adapter HL700/HL710-52	T45	T45	600

Coupling Sleeve	ASE Part No.	Description	Model	Dimensions				
				L (mm)	ft	in	D (mm)	in
	DTTH-45-CS3663-L 210	Coupling Sleeve T45 L-210	T45	210		8 1/8"	63	2 31/64"

Bits	ASE Part No.	Description	Model	Flushing Hole (mm)		Buttons (mm)		Angle	Dimensions	
				Front No Size	Gauge No Size	Front No Size	Gauge No Size		mm	in
	DTTH-51-R102HDC	102mm Button bit, Retracs H	T51	3×13	-	9×11	9×13	35°	102	4"
	DTTH-51-R102SDC	102mm Button bit, Retracs S	T51	3×13	-	9×11	9×13	40°	102	4"
	DTTH-51-R89HFF	89mm Button bit, Retracs	T51	3×12	1×8	6×10	9×11	35°	89	3 1/2"
	DTTH-51-R102SDC	102mm Button bit, Retracs	T51	3×11	1×11	3×11	8×13	40°	102	4"
	DTTH-51-R89SDC	89mm Button bit, Retracs S	T51	4×10	-	6×11	8×12	40°	89	3 1/2"
	DTTH-51-RSK89HF F	89mm Button bit, Regular Skirt	T51	3×12	1×8	6×10	9×11	35°	89	3 1/2"
	DTTH-45-R102HDC	102mm Button bit, Retracs H	T45	3×10	-	9×11	9×13	35°	102	4"
	DTTH-45-R76HDC	76mm Button bit, Retracs H	T45	2×11	1×6	6×10	8×11	35°	76	3"
	DTTH-45-R89HDC	89mm Button bit, Retracs	T45	3×10	1×6	6×10	9×11	35°	89	3 1/2"



+971 55 956 2619
marketing.ase@alshirawi.ae